

Anatomy (Final)

بعذر اذا تواجد أي خطأ ٨-٨ وبالتوفيق

**Part one: Theory (neuro & head and neck)*

1) Hypoglossal nerve originates:

Ans: Between Pyramid and olive

2) Which nerve passes through incisive canal:

Ans: Nasopalatine nerve

3) All of the following supplied by vagus nerve except?

Ans: stylopharyngeus muscle

4) All of the following pass through triangular aperture except?

Ans: genioglossus muscle

5) The insertion of middle constrictor?

Ans: stylohyoid ligament + lesser and greater horn of hyoid bone

6) All of the following are content of ant. Triangle except?

Ans: superior thyroid artery

7) All of the following are content of posterior triangle except?

a) Lesser occipital nerve

b) Ansa cervicalis

Ans: B

8) Wrong statement about thyroid gland?

Ans: Anterolateral internal jugular + common carotid + vagus

9) Wrong about submandibular gland?

Ans: Surgery in this gland; facial nerve gets injured

10) Wrong about sphenoid bone?

a) petrous portion

b) Sella turcica

Ans: A

11) Not a branch of facial artery?

Ans: Buccal artery

12) Wrong about the muscles of the larynx?

Ans: Posterior cricoarytenoid adduction

13) Foliculonodular lobe is separated from cerebellum by:

Ans: Posterolateral fissure

14) Not a floor of carotid triangle?

Ans: Superior constrictor muscle

15) Which of the following pierces thyrohyoid membrane?

Ans: internal laryngeal nerve

16) Mucosa of larynx above vocal cord is supplied by:

Ans: internal laryngeal nerve

17) Facial nerve supply all except?

a) buccinator

b) ant. Belly Digastric

c) platysma

Ans: B

18) To anesthesia lower second molar you block which nerve?

Ans: IDN

19) Not ophthalmic nerve branch?

Ans: zygomatic nerve

20) The structure that joins the occipital lobes?

A) minor forceps

b) major forceps

Ans: B

21) C1 supplies:

Ans: thyrohyoid muscle

22) Wrong about maxillary sinuses?

Ans: drains into the inferior nasal meatus

23) Mismatch of posterior triangle?

Ans: the inferior border is the lateral part of clavicle

24) Is not a branch of basilar artery?

Ans: posterior inferior cerebellar

25) internal capsule fibers type?

Ans: Projection fibers

26) frontal eye field is located in:

Ans: middle frontal gyrus

27) wrong about oropharynx:

Ans: Pharyngeal tonsils in the lateral wall

28) wrong about nasal cavity:

Ans: lacrimal bone contributes as a part of its roof

29) not supplied by vertebrobasilar system:

a) temporal lobe

b) pons

c) visual cortex

Ans: A

30) Not part of circle of Willis?

Ans: middle cerebral artery

31) post limb of internal capsule is between?

Ans: thalamus and lentiform

32) Buccal gingiva of second upper molar is supplied by:

Ans: greater palatine

33) Wrong about tensor veli palatini muscle:

Ans: it causes the closure of pharyngotympanic tube

34) not content of digastric triangle:

Ans: geniohyoid

35) what artery supplies the anterior end of caudate and lentiform nucleus:

Ans: Anterior cerebral artery

36) wrong about external carotid:

Ans: starts at the lower border of thyroid cartilage

37) Superior angle of the 4th ventricle attached to?

Ans: cerebral aqueduct

38) CSF is drained by:

Ans: arachnoid villi and granulations

39) general sensation of ant 2/3 of the tongue?

Ans: chorda tympani from facial nerve

40) The area responsible of fine movements?

Ans: gyrus in front of central sulcus (precentral gyrus)

41) Wernicke's area contributes which part in the cortex:

Ans: Lateral sulcus

42) wrong statement:

a) the superior nasal meatus is between superior and middle concha

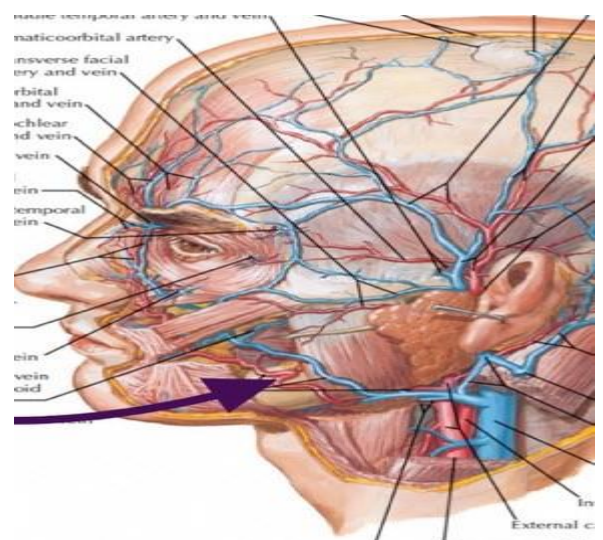
b) maxillary sinus opens into inferior meatus:

Ans: B

**Part two: Lab (neuro & head and neck)*

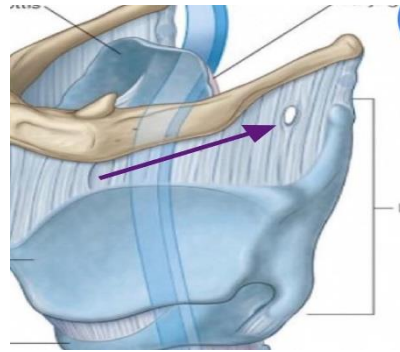
1) The purple arrow refers to:

Ans: facial artery



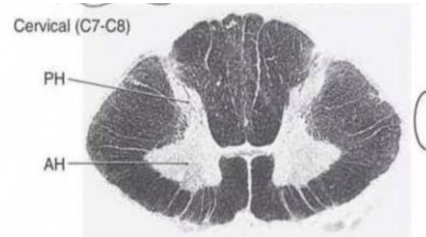
2) What passes through this foramen?

Ans: Internal laryngeal nerve



3) This segment refers to?

Ans: C7 segment



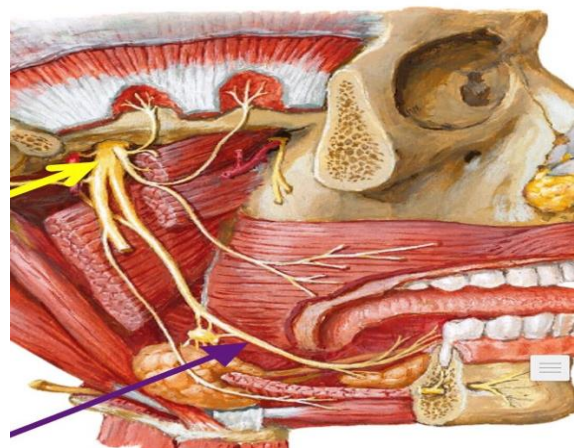
4) what kind of neurons you can see in the anterior horn?

Ans: lower motor neurons



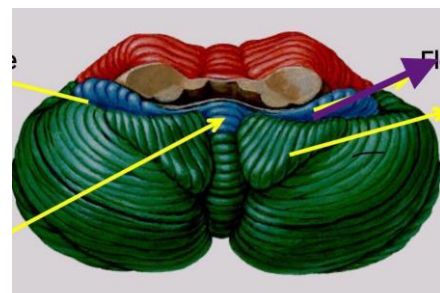
5) The purple arrow refers to:

Ans: lingual nerve



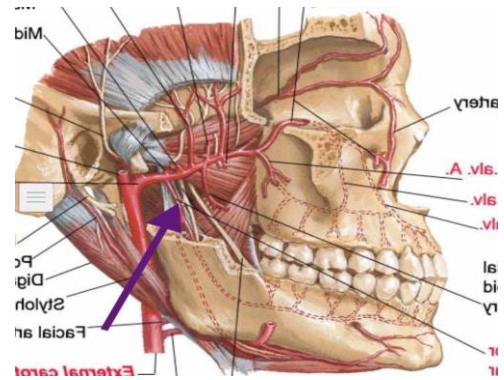
6) The purple arrow refers to:

Ans: foliculonodular lobe



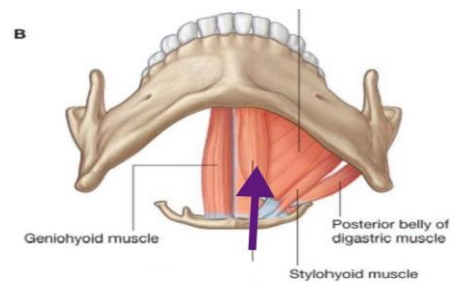
7) The purple arrow refers to:

Ans: Inferior alveolar artery



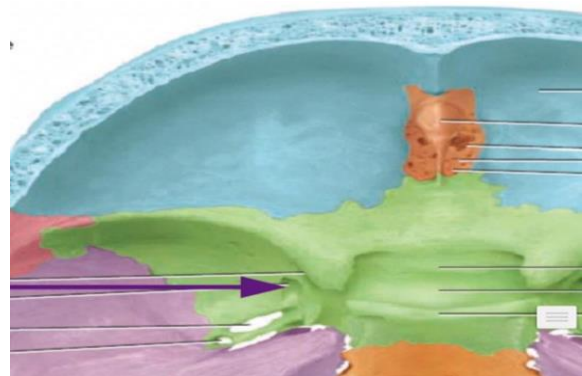
8) The purple arrow refers to:

Ans: anterior belly of digastric



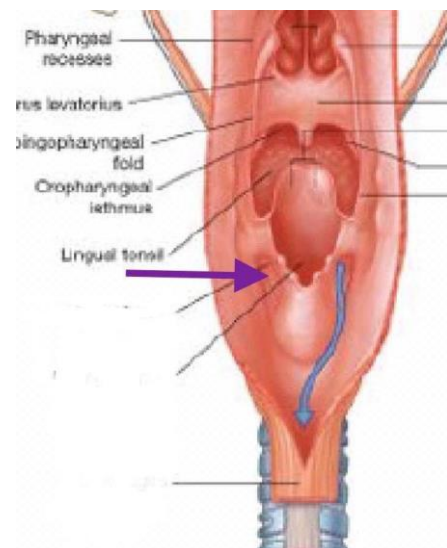
9) The purple arrow refers to:

Ans: foramen rotundum



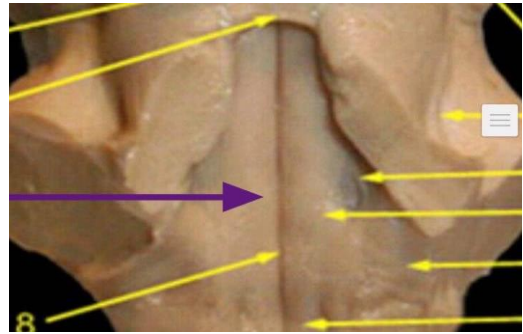
10) The purple arrow refers to:

Ans: piriform fossae



11) This place refers to?

Ans: the floor of the fourth ventricle



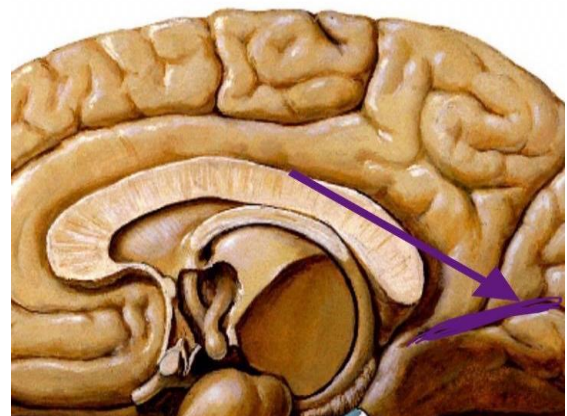
12) The purple arrow refers to:

Ans: postcentral gyrus



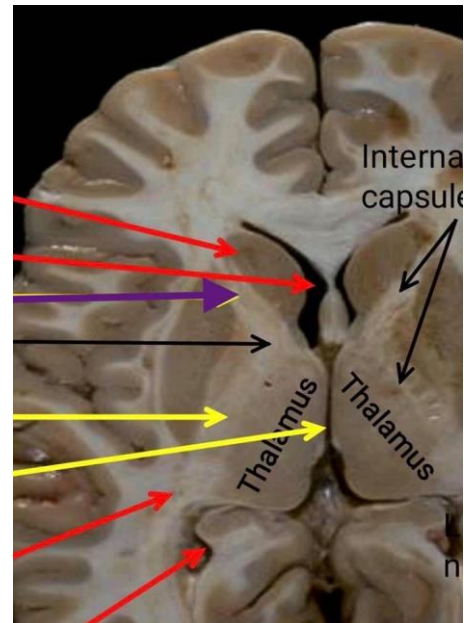
13) The purple arrow refers to:

Ans; calcarine sulcus



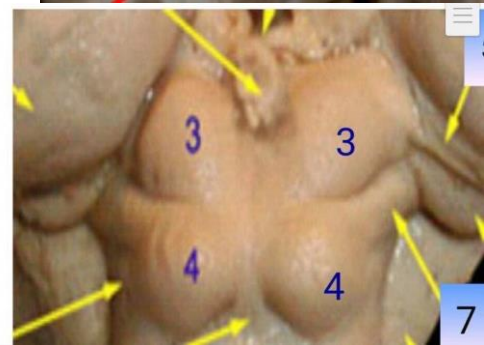
14) The purple arrow refers to:

Ans: anterior limb of internal capsule



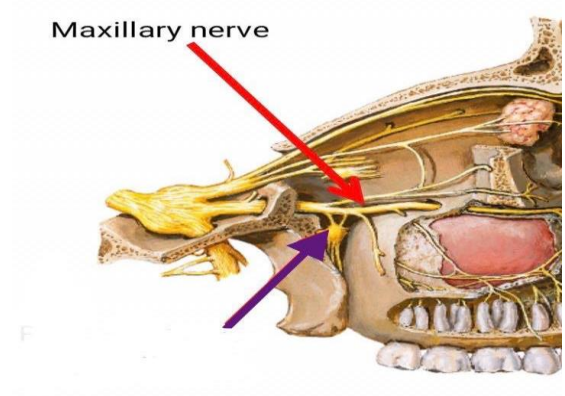
15) number 3 refers to?

Ans: Superior colliculus



16) The purple arrow refers to:

Ans: pterygopalatine ganglion



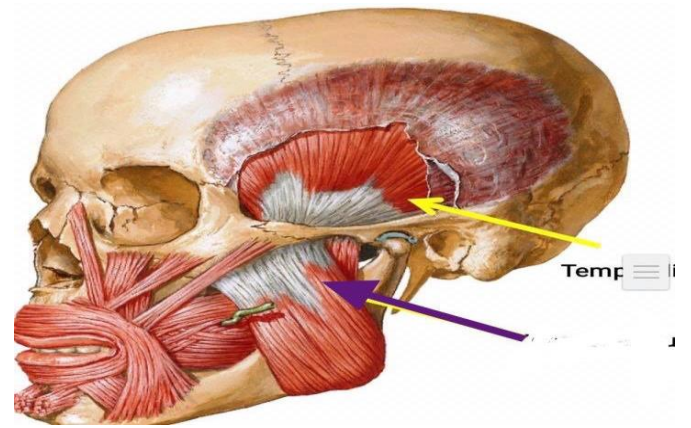
17) The purple arrow refers to:

Ans: pterygomaxillary fissure



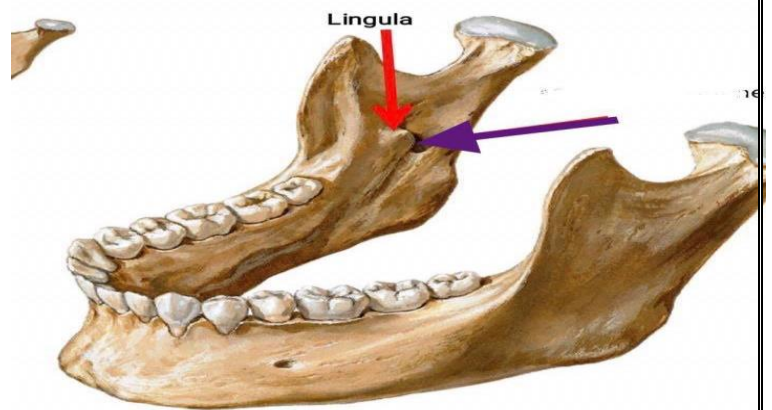
18) The purple arrow refers to:

Ans: masseter muscle



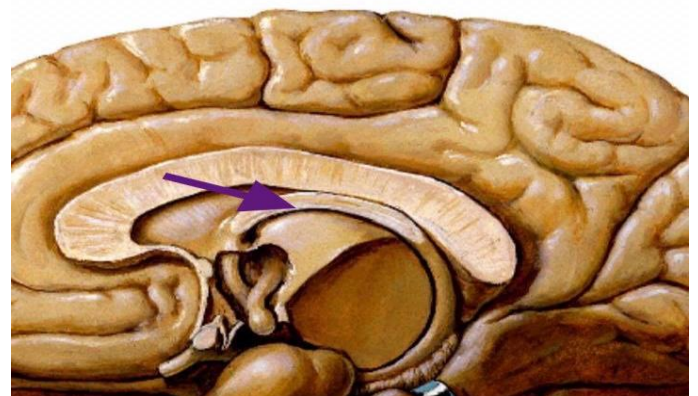
19) which nerve passes through this foramen?

Ans: inferior alveolar nerve



20) The purple arrow refers to:

Ans: fornix



موفقين ^_^

Done by: Rahaf Al-Jafari